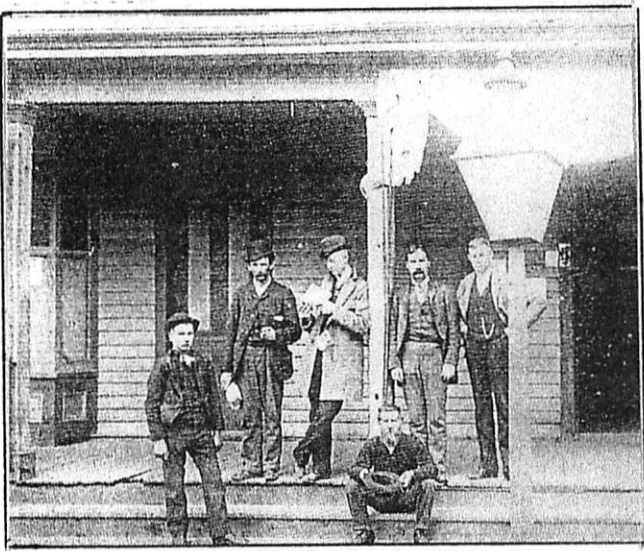




Our guest speakers for the month of June 2017 will be Joseph Bilby and Harry Ziegler and they will give us a **History of Submarine Warfare along the Jersey Shore.**

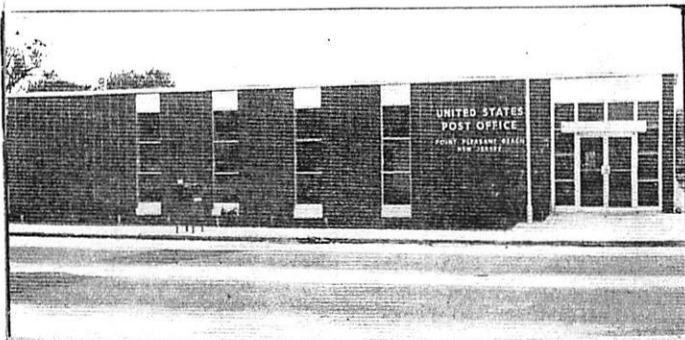
**“Neither rain nor snow, nor sleet nor dark of night shall stay these couriers from the swift completion of their appointed rounds.”**



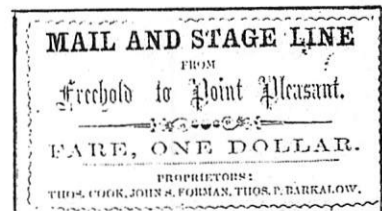
The photo on the left was the Point Pleasant Bch. Post Office from 1881 to 1906, a popular gathering place on the southeast corner of Bay and Arnold Ave. On the right is a photo of that same corner after the devastating fire of 1906.



Michael Gottlieb had already purchased a lot across Arnold Ave. next to John Arnold Hall in the winter of 1906, with a plan to build a new store (photo on left). It was as if he foresaw the fire that was to come. The Post Office ended up in the Gottlieb Building for 11 years before it was relocated down Arnold Ave. east of The Point Pleasant Hardware Building (photo on right).



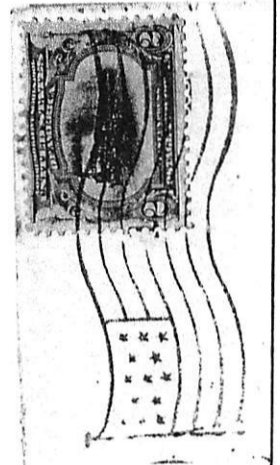
NEW POINT PLEASANT BEACH POST OFFICE



In the early years, c.1858, it was not uncommon for local boardinghouse owners to sponsor a stage to operate and bring mail and people into town to stay in their resorts. It would run on Herbertsville Rd. to Squankum, Jamesburg and into Freehold and back.

Point Pleasant  
 Historical Society  
 Phone: 732-892-3091  
 E: ppphistoricalsociety@gmail.com  
 Website: Pointpleasanthistory.com

Point Pleasant Historical Society  
 P. O. Box 1273  
 Point Pleasant Beach, NJ 08742



## POST OFFICE DEPARTMENT

UNITED STATES OF AMERICA

There is very little information about the post office's in the Borough of Point Pleasant. It is believed that the original post office was on the south side of Rt. 35 (now Rt. 88) just east of the canal bridge. Ed Williams was the Postmaster. Until 1956 the post office carried the name of West Point Pleasant. The "old timers" had trouble dropping "West" from the name. With the construction of the new bridge the highway was widened and the post office was demolished and the new one was relocated a short distance away on the southeast corner of Ocean Road (Rt.88) and Johnson Ave. next to the telephone building. In 1968 the post office was again relocated to Bridge Ave. next to the borough hall.

