



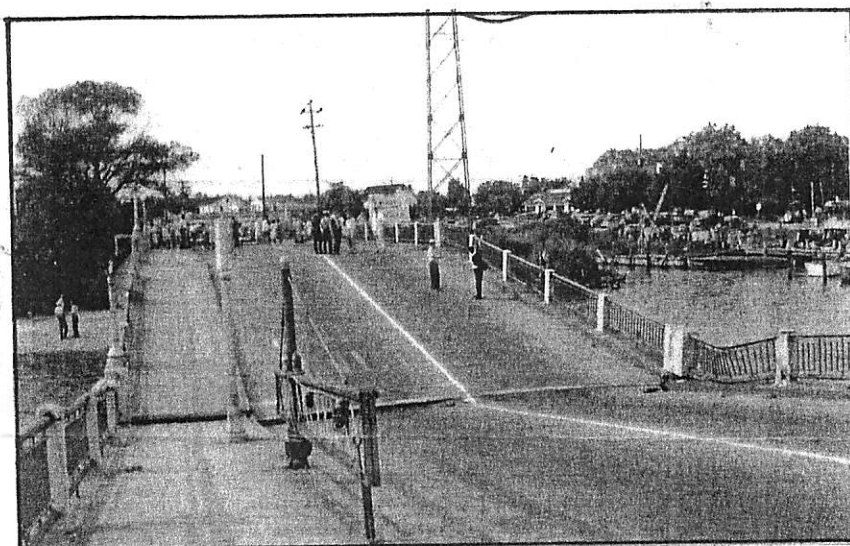
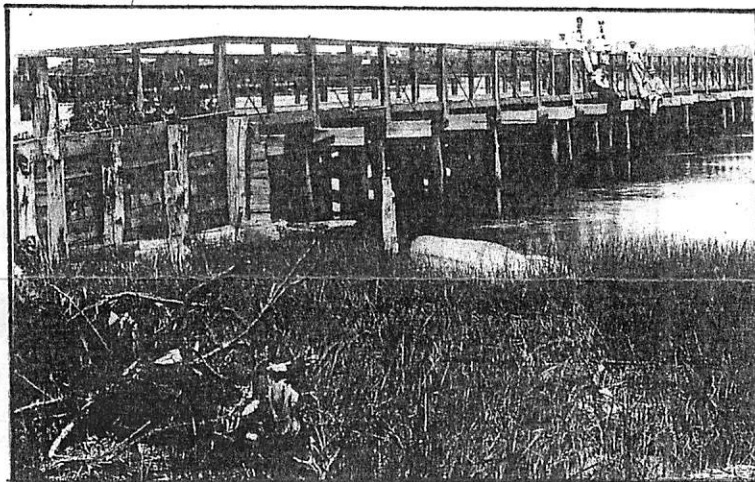
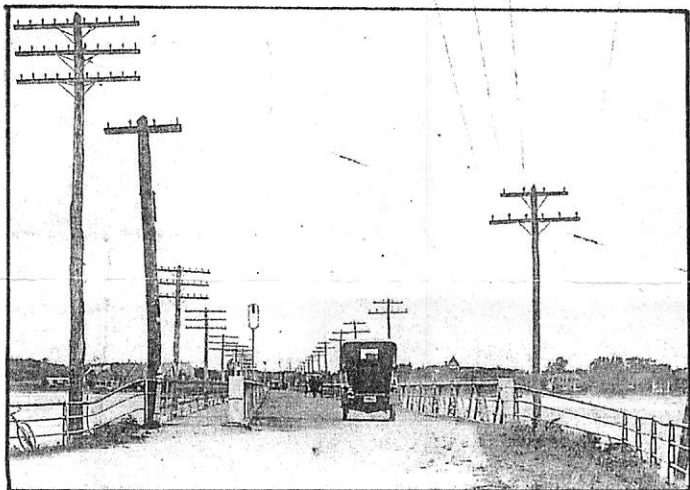
●●●Troubled Bridges Over Calm Waters●●●

The Manasquan River Bridge

The first bridge to cross the river from Brielle to Point Pleasant was a wooden draw bridge built in 1875. Up until this time the only way to travel across was the Allen-Osborn Bridge located west of where the Rt. 70 bridge now stands. This wooden bridge was in need of constant repair and was condemned in 1895 except for pedestrian and bicycle traffic

In 1897 the wooden bridge was replaced with an iron swing bridge which soon began to rot from the salt water and air and by 1920 was in danger of collapse. This bridge was replaced in the 1920's.

In 1946 the wooden timbers supporting the bridge span collapsed without warning due to the destruction by "shipworms" eating away of these timbers. Again the bridge had to be replaced, this time with an all concrete bridge which opened in May 1951.



●●●The Ocean Road-Lakewood Road Route 88 Bridge●●●

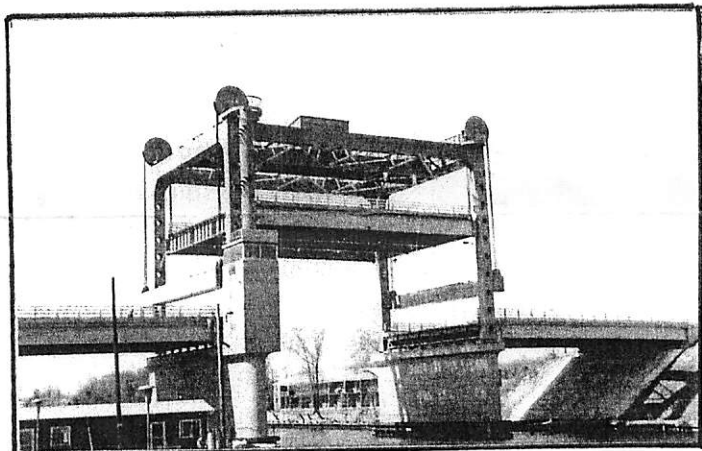
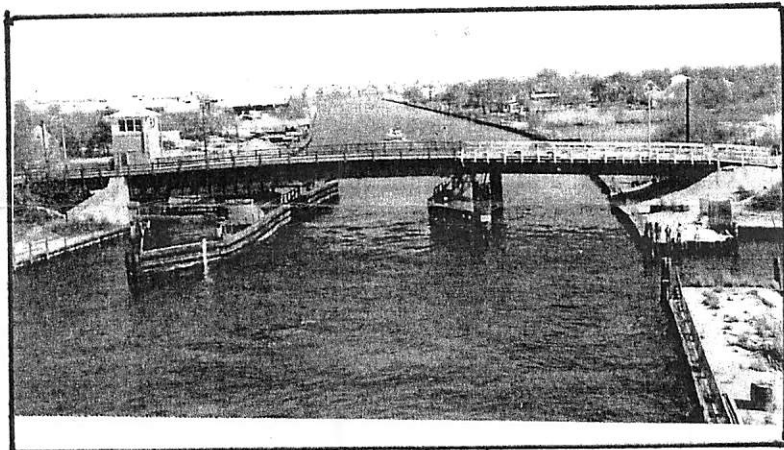
In January of 1924 construction began on the Lakewood Rd. bridge. Because the canal had not been completed all the way to the river, traffic on the road was rerouted to River Road which terminated at Arnold Ave. Once the canal was completed and the bridge built, the River Road section east of the canal was renamed Pine Bluff Ave. after the Pine Bluff Inn on the river front. The Lakewood Rd.- Ocean Road bridge was completed in 1924, two years before the canal was finished.

The new vertical lift bridge was finished during the summer of 1986. There were delays because of late deliveries of the huge steel I-beams. The waterway had to be opened up with demolition charges to get rid of the concrete counterbalances and supports left in the water.

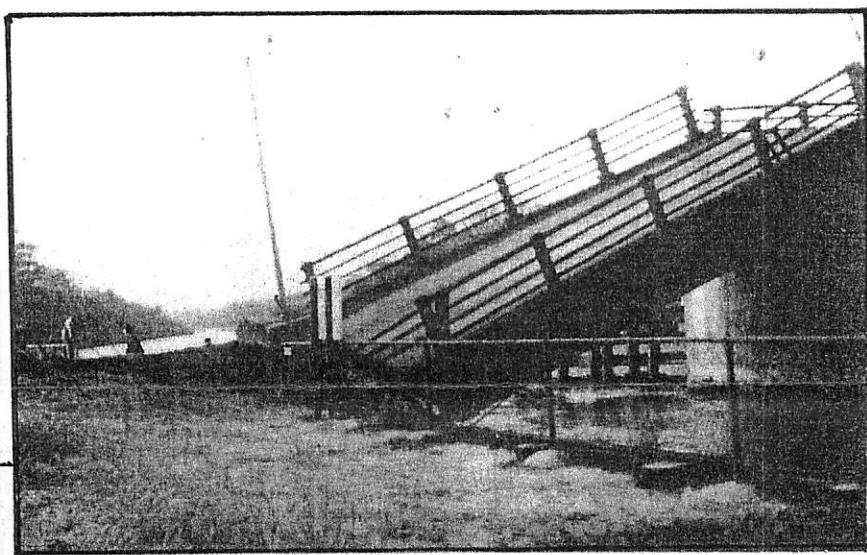
• • • The Loveland Town Bridge • • •

The first bridge was built shortly after the canal was dug in 1929. The canal had isolated the two neighborhoods of Loveland Town on the east side and Dorsett Town on the west.

During the March Storm of 1962 The original bridge collapsed. The new vertical lift bridge replaced it in 1972.

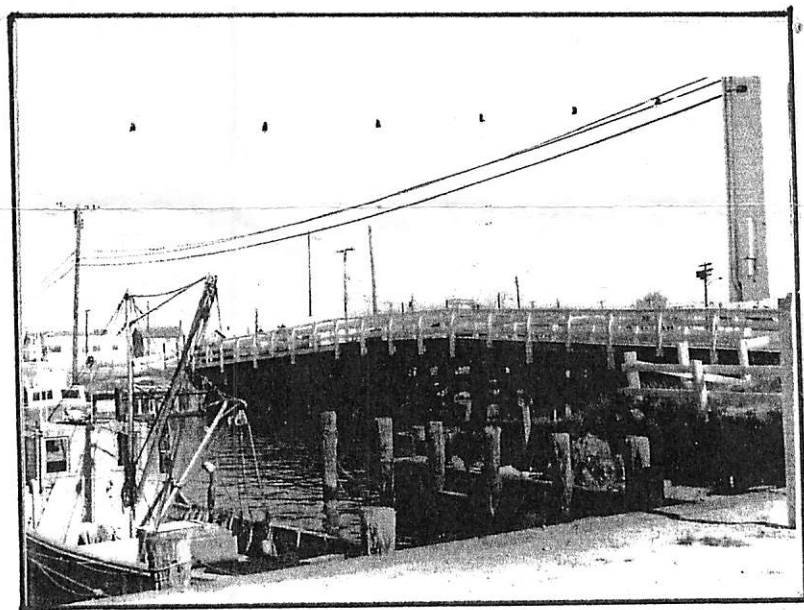


TRAFFIC DELAY
BRIDGE OPEN



BRIDGE
CONSTRUCTION
DETOUR
→

This months meeting will be on Monday March 12th at the Woman's Club, 513 St. Louis Ave. Point Pleasant Beach at 7:30 PM. Our guest speaker will be author Gordon Hesse a 1965 graduate of Point Pleasant Beach High School. He will speak about his book "Island Beach", a sonnet in the sea. A unique history of this state park.



On the left is a photo of the wooden bridge at the east end of Broadway. We have little information about when it was built or rebuilt. The bronze plaque on the railing reads "The Richard Lane Bridge Adopted in November 2000".