

FIRST FLOOR:

TOTAL HEATED FLOOR AREA = 4,211 GSF
TOTAL COMMON FLOOR AREA = 445 GSF
TOTAL GARAGE FLOOR AREA = 6,650 GSF
[4] TWO-BEDROOM UNITS
[4] RESIDENTIAL UNITS
[16] PARKING SPOTS UNDER BUILDING

**1 FIRST FLOOR PLAN**  
SCALE: 1/8" = 1'-0"

NEW CONSTRUCTION FOR:  
**THE WENKES COTTAGES (24 UNIT BUILDING)**  
2613-2615 NJ STATE HIGHWAY 88  
POINT PLEASANT, NJ  
BLOCK: 45 LOT: 1

THESE DOCUMENTS, DESIGNS, DETAILS & IDEAS INCORPORATED HEREIN ARE INSTRUMENTS OF PROFESSIONAL SERVICE AND ARE THE EXCLUSIVE PROPERTY OF STUDIO 200 ARCHITECTURE LLC. THE DOCUMENTS, DESIGNS, DETAILS & IDEAS ARE NOT TO BE USED, COPIED OR REPRODUCED IN WHOLE OR IN PART WITHOUT THE WRITTEN CONSENT OF STUDIO 200 ARCHITECTURE LLC.

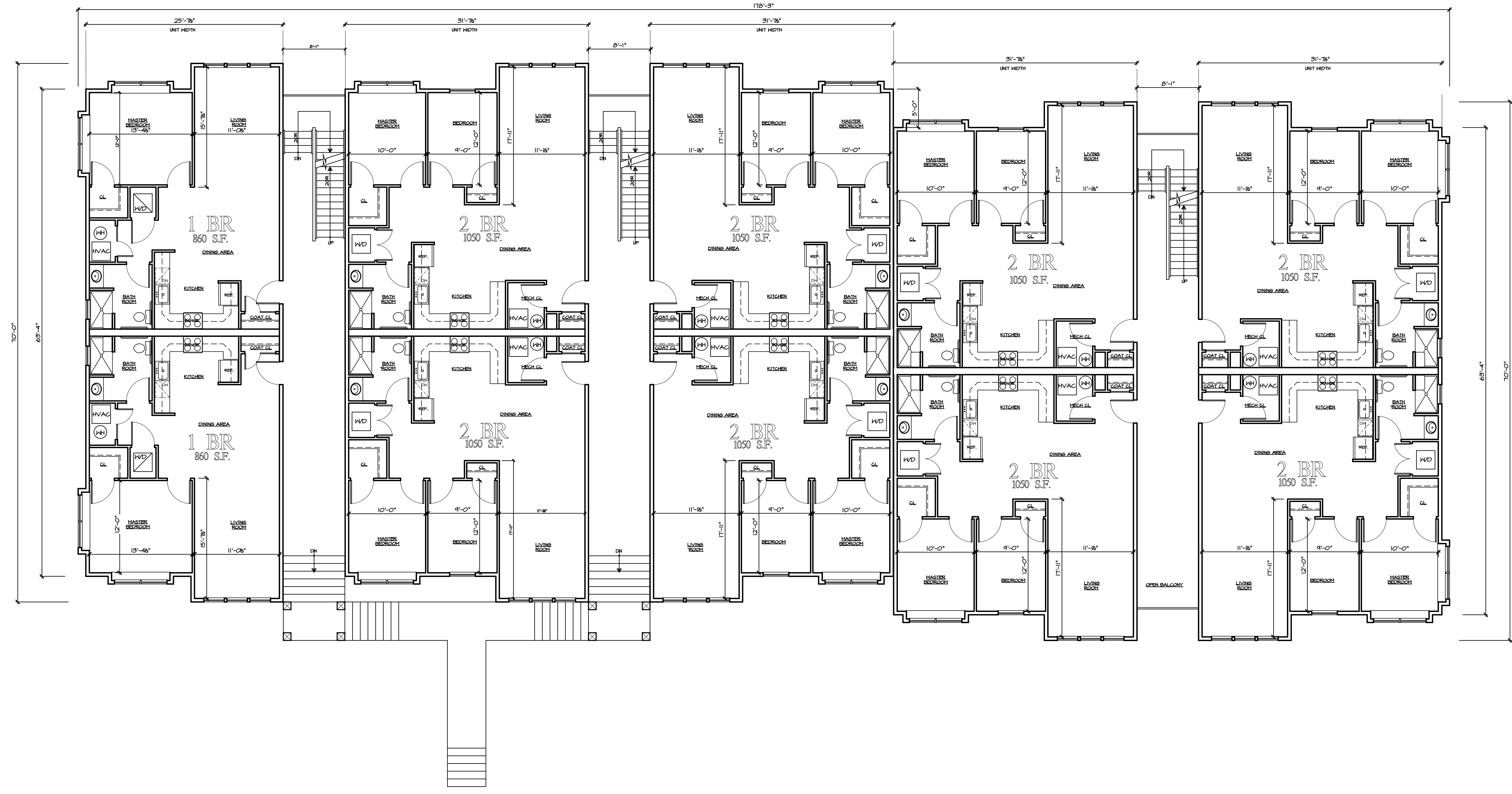
REVISIONS		
BY:	DATE	
Rev. 1	JB	6-30-20
Rev. 2	JB/TR	10-16-20
Rev. 4	JB/TR/DS	2-8-21

ISSUE DATE:	04-21-20
SCALE:	AS NOTED
DRAWN:	JB / TR / DS
CHECKED:	JB

PROJECT #	219-148
SHEET TITLE:	FIRST FLOOR PLAN
SHEET #	<b>A1.0</b>

PLANNING BOARD SUBMISSION

DO NOT SCALE THE DRAWINGS



SECOND FLOOR:

TOTAL HEATED FLOOR AREA = 9,671 GSF
TOTAL COMMON FLOOR AREA = 1,467 GSF
[8] TWO-BEDROOM UNITS
[2] ONE-BEDROOM UNITS
[10] RESIDENTIAL UNITS

1 SECOND FLOOR PLAN  
SCALE: 1/8" = 1'-0"

NEW CONSTRUCTION FOR:  
THE WENKES COTTAGES (24 UNIT BUILDING)  
2613-2615 NJ STATE HIGHWAY 88  
POINT PLEASANT, NJ  
BLOCK: 45 LOT: 1

THESE DOCUMENTS, DESIGNS, DETAILS & IDEAS INCORPORATED HEREIN ARE INSTRUMENTS OF PROFESSIONAL SERVICE AND ARE THE EXCLUSIVE PROPERTY OF STUDIO 200 ARCHITECTURE LLC. THE DOCUMENTS, DESIGNS, DETAILS & IDEAS ARE NOT TO BE USED, COPIED OR REPRODUCED IN WHOLE OR IN PART WITHOUT THE WRITTEN CONSENT OF STUDIO 200 ARCHITECTURE LLC.

REVISIONS	BY:	DATE
Rev. 1	JB	6-30-20
Rev. 2	JB/TR	10-16-20
Rev. 4	JB/TR/DS	2-8-21

ISSUE DATE:	04-21-20
SCALE:	AS NOTED
DRAWN:	JB / TR / DS
CHECKED:	JB

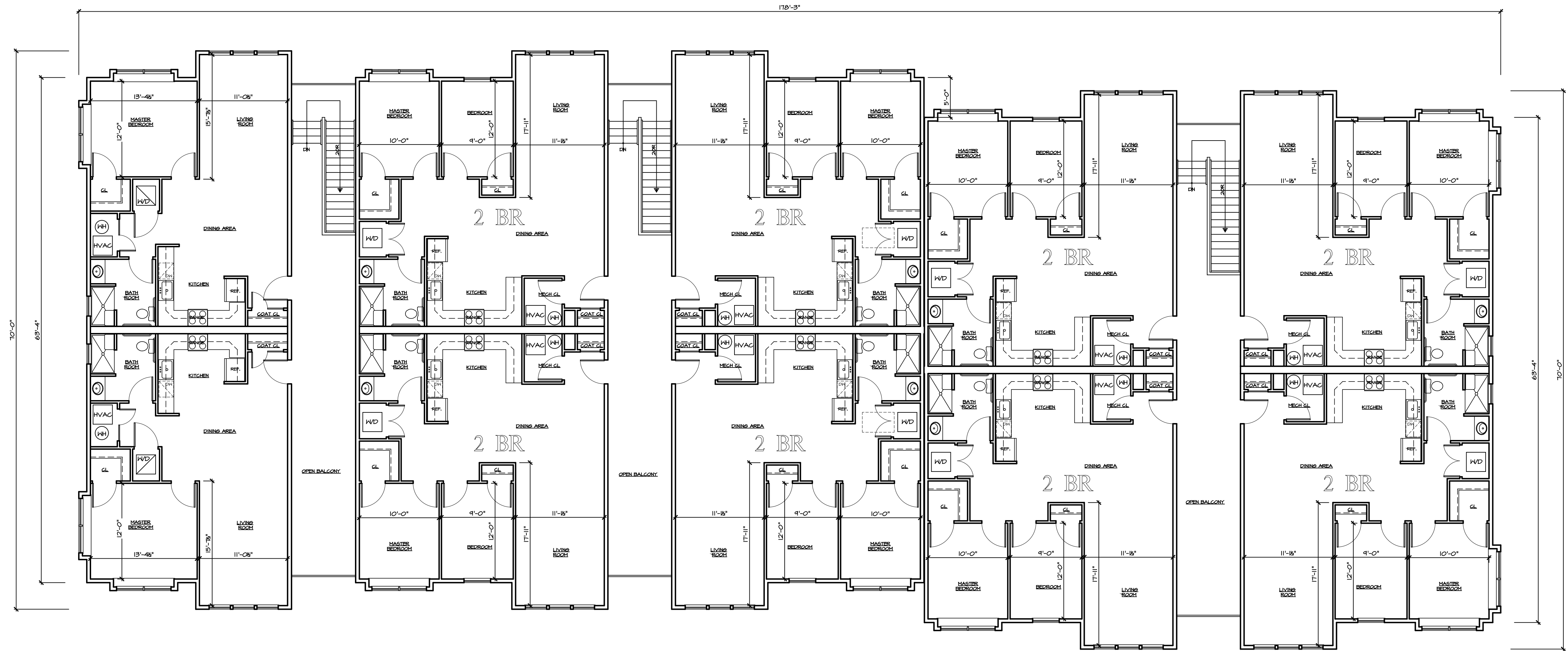
PROJECT # 219-148

SHEET TITLE:  
SECOND FLOOR PLAN

SHEET #  
**A1.1**

PLANNING BOARD  
SUBMISSION

DO NOT SCALE THE DRAWINGS



THIRD FLOOR:

TOTAL HEATED FLOOR AREA = 9,671 GSF
TOTAL COMMON FLOOR AREA = 1,461 GSF
[8] TWO-BEDROOM UNITS
[2] ONE-BEDROOM UNITS
[10] RESIDENTIAL UNITS

1 THIRD FLOOR PLAN  
A1.2 SCALE: 1/8" = 1'-0"

NEW CONSTRUCTION FOR:  
THE WENKES COTTAGES (24 UNIT BUILDING)  
2613-2615 NJ STATE HIGHWAY 88  
POINT PLEASANT, NJ  
BLOCK: 45 LOT: 1

THESE DOCUMENTS, DESIGNS, DETAILS & IDEAS INCORPORATED HEREIN ARE INSTRUMENTS OF PROFESSIONAL SERVICE AND ARE THE EXCLUSIVE PROPERTY OF STUDIO 200 ARCHITECTURE LLC. THE DOCUMENTS, DESIGNS, DETAILS & IDEAS ARE NOT TO BE USED, COPIED OR REPRODUCED IN WHOLE OR IN PART WITHOUT THE WRITTEN CONSENT OF STUDIO 200 ARCHITECTURE LLC.

REVISIONS	
BY:	DATE
Rev. 1 JB	6-30-20
Rev. 2 JB/TR	10-16-20
Rev. 4 JB/TR/DS	2-8-21

ISSUE DATE:	04-21-20
SCALE:	AS NOTED
DRAWN:	JB / TR / DS
CHECKED:	JB

PROJECT # 219-148

SHEET TITLE:  
THIRD FLOOR PLAN

SHEET #  
A1.2

PLANNING BOARD  
SUBMISSION

DO NOT SCALE THE DRAWINGS

SEAL  
*John F. Burgdorfer*  
SIGNATURE DATE

NEW CONSTRUCTION FOR:  
THE WENKES COTTAGES (24 UNIT BUILDING)  
2613-2615 NJ STATE HIGHWAY 88  
POINT PLEASANT, NJ  
BLOCK: 45  
LOT: 1

THESE DOCUMENTS, DESIGNS, DETAILS & IDEAS INCORPORATED HEREIN ARE INSTRUMENTS OF PROFESSIONAL SERVICE AND ARE THE EXCLUSIVE PROPERTY OF STUDIO 200 ARCHITECTURE LLC. THE DOCUMENTS, DESIGNS, DETAILS & IDEAS ARE NOT TO BE USED, COPIED OR REPRODUCED IN WHOLE OR IN PART WITHOUT THE WRITTEN CONSENT OF STUDIO 200 ARCHITECTURE LLC.

REVISIONS	
BY:	DATE
Rev. 1 JB	6-30-20
Rev. 2 JB/TR	10-16-20
Rev. 4 JB/TR/DS	2-8-21

ISSUE DATE: 04-21-20  
SCALE: AS NOTED  
DRAWN: JB / TR / DS  
CHECKED: JB

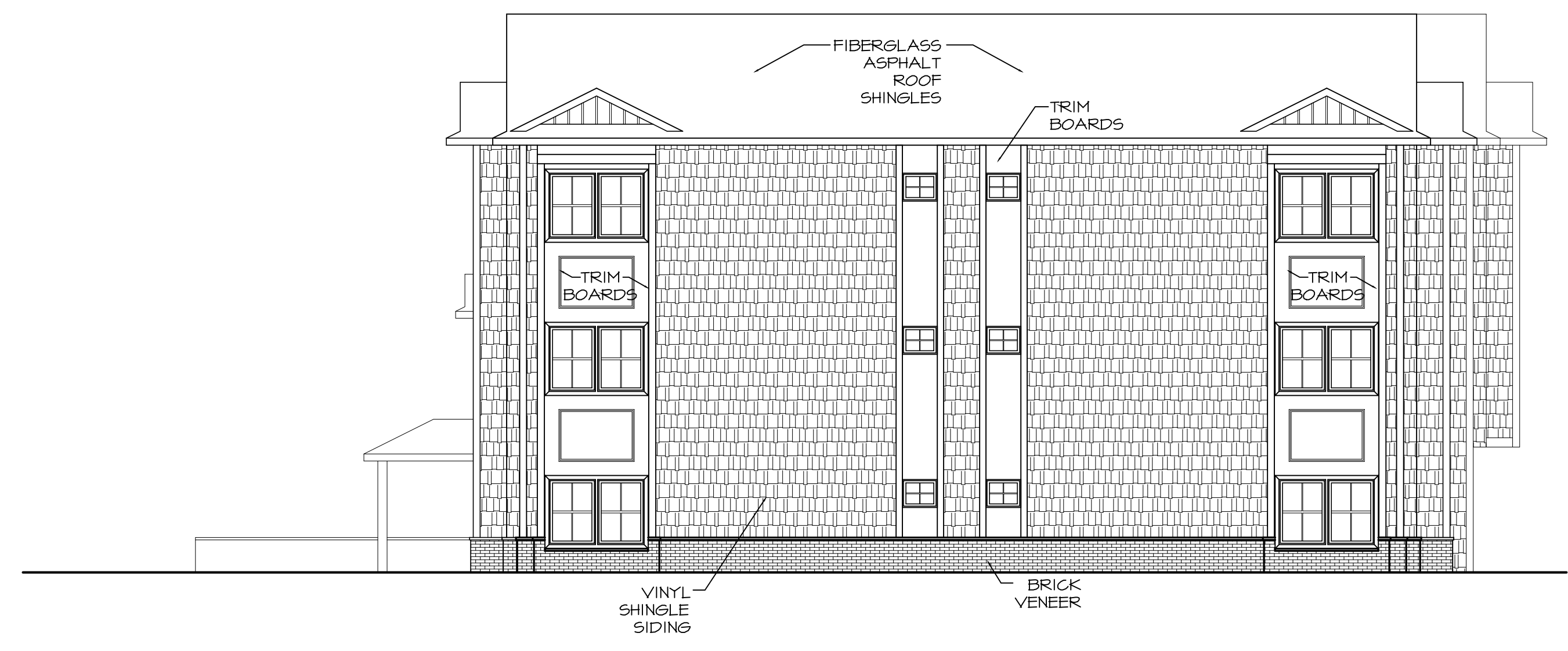
PROJECT # 219-148

SHEET TITLE:  
24 UNIT BLDG  
ELEVATIONS

SHEET #  
**A2.0**



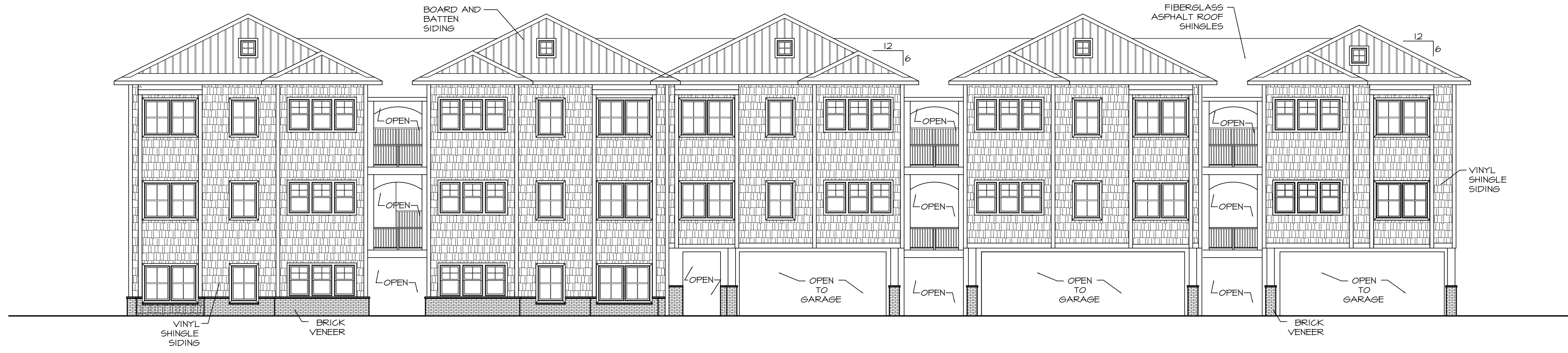
1 CURTIS AVE ELEVATION  
A2.0 SCALE: 1/8" = 1'-0"



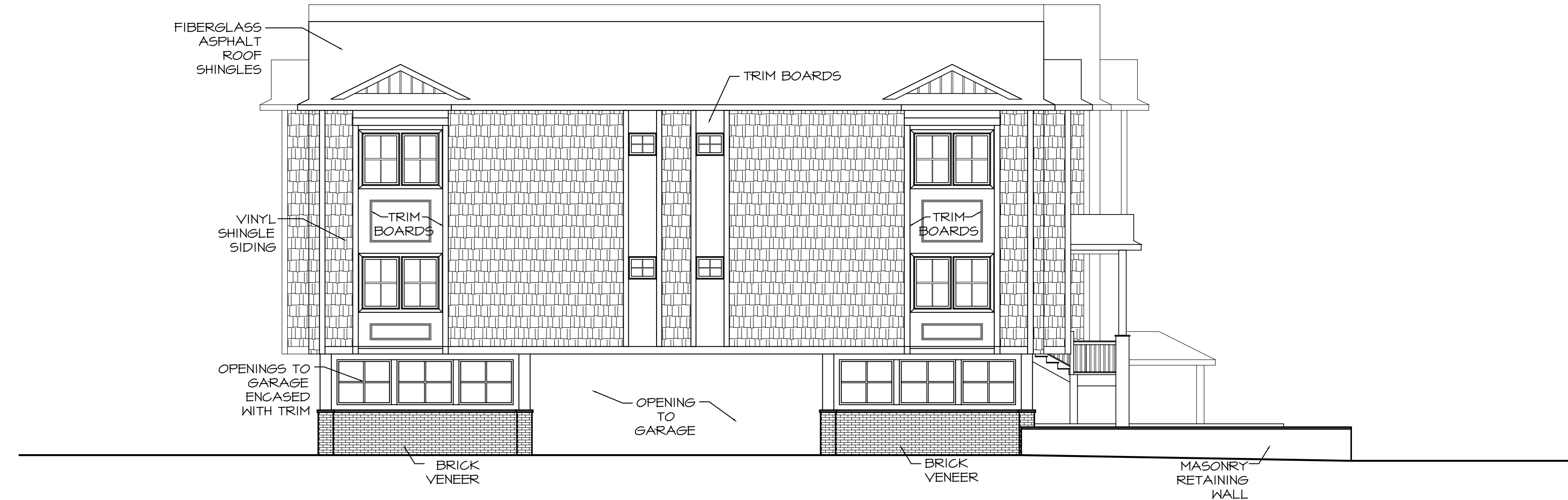
2 ROUTE 88 ELEVATION  
A2.0 SCALE: 1/8" = 1'-0"

PLANNING BOARD  
SUBMISSION

DO NOT SCALE THE DRAWINGS



1 REAR ELEVATION  
A2.1 SCALE: 1/8" = 1'-0"



2 AUSTIN AVE ELEVATION  
A2.1 SCALE: 1/8" = 1'-0"

NEW CONSTRUCTION FOR:  
THE WENKES COTTAGES (24 UNIT BUILDING)  
2613-2615 NJ STATE HIGHWAY 88  
POINT PLEASANT, NJ  
BLOCK: 45 LOT: 1

THESE DOCUMENTS, DESIGNS, DETAILS & IDEAS INCORPORATED HEREIN ARE INSTRUMENTS OF PROFESSIONAL SERVICE AND ARE THE EXCLUSIVE PROPERTY OF STUDIO 200 ARCHITECTURE LLC. THE DOCUMENTS, DESIGNS, DETAILS & IDEAS ARE NOT TO BE USED, COPIED OR REPRODUCED IN WHOLE OR IN PART WITHOUT THE WRITTEN CONSENT OF STUDIO 200 ARCHITECTURE LLC.

REVISIONS	
BY:	DATE
Rev. 1 JB	6-30-20
Rev. 2 JB/TR	10-16-20
Rev. 4 JB/TR/DS	2-8-21

ISSUE DATE:	04-21-20
SCALE:	AS NOTED
DRAWN:	JB / TR / DS
CHECKED:	JB

PROJECT # 219-148

SHEET TITLE:  
24 UNIT BLDG  
ELEVATIONS

SHEET #  
**A2.1**

PLANNING BOARD  
SUBMISSION

DO NOT SCALE THE DRAWINGS



1 ROUTE 88 RENDERING  
A2.2 SCALE: No Scale



2 CURTIS AVE RENDERING  
A2.2 SCALE: No Scale

PLANNING BOARD  
SUBMISSION

DO NOT SCALE THE DRAWINGS

STUDIO  
TWO  
HUNDRED  
LLC  
ARCHITECTURE DESIGN

200 UNION AVENUE  
BRIELLE, NJ 08730  
P: 732-528-2240  
WWW.STUDIO200ARCH.COM  
NJ COA # 21AC00092000

JOHN B. BURGDORFER, RA  
NJ ARCHITECT # AI 12599  
FL ARCHITECT # AK 92380  
PA ARCHITECT # RA 403680  
NY ARCHITECT # 032640-1  
NCARB REG. # 53957

SEAL  
*John B. Burdorfer*  
SIGNATURE DATE

NEW CONSTRUCTION FOR:  
THE WENKES COTTAGES (24 UNIT BUILDING)  
2613-2615 NJ STATE HIGHWAY 88  
POINT PLEASANT, NJ  
BLOCK: 45 LOT: 1

THESE DOCUMENTS, DESIGNS, DETAILS & IDEAS INCORPORATED HEREIN ARE INSTRUMENTS OF PROFESSIONAL SERVICE AND ARE THE EXCLUSIVE PROPERTY OF STUDIO 200 ARCHITECTURE LLC. THE DOCUMENTS, DESIGNS, DETAILS & IDEAS ARE NOT TO BE USED, COPIED OR REPRODUCED IN ANY MANNER WITHOUT THE WRITTEN CONSENT OF STUDIO 200 ARCHITECTURE LLC.

REVISIONS	
BY:	DATE
Rev. 1 JB	6-30-20
Rev. 2 JB/TR	10-16-20
Rev. 3 JB/TR	10-20-20
Rev. 4 JB/TR/DS	2-8-21

ISSUE DATE: 04-21-20  
SCALE: AS NOTED  
DRAWN: JB / TR / DS  
CHECKED: JB

PROJECT # 219-148

SHEET TITLE:  
BUILDING  
RENDERINGS

SHEET #  
A2.2



1 AUSTIN AVE RENDERING  
SCALE: No Scale



2 REAR RENDERING  
SCALE: No Scale



3 SIGN RENDERING  
SCALE: No Scale

NEW CONSTRUCTION FOR:  
THE WENKES COTTAGES (24 UNIT BUILDING)  
2613-2615 NJ STATE HIGHWAY 88  
POINT PLEASANT, NJ  
BLOCK: 45 LOT: 1

THESE DOCUMENTS, DESIGNS, DETAILS & SEALS INCORPORATED HEREIN ARE INSTRUMENTS OF PROFESSIONAL SERVICE AND ARE THE EXCLUSIVE PROPERTY OF STUDIO 200 ARCHITECTURE LLC. THE DOCUMENTS, DESIGNS, DETAILS & SEALS ARE NOT TO BE USED, COPIED OR REPRODUCED IN WHOLE OR IN PART WITHOUT THE WRITTEN CONSENT OF STUDIO 200 ARCHITECTURE LLC.

REVISIONS	
BY:	DATE
Rev. 1 JB	6-30-20
Rev. 2 JB/TR	10-16-20
Rev. 3 JB/TR	10-20-20
Rev. 4 JB/TR/DS	2-8-21

ISSUE DATE:	04-21-20
SCALE:	AS NOTED
DRAWN:	JB / TR / DS
CHECKED:	JB

PROJECT #	219-148
SHEET TITLE:	BUILDING RENDERINGS
SHEET #	A2.3

PLANNING BOARD  
SUBMISSION