

FIRST FLOOR: 1,905 SF  
 SECOND FLOOR: 1,905 SF  
 THIRD FLOOR: 6,952 SF  
**TOTAL: 22,162 SF**

**1 GROUND FLOOR PLAN**  
 1,905 SF  
 3/16" = 1'-0"



**ZONING BOARD OF ADJUSTMENT APPROVAL**

APPROVED AT THE ZONING BOARD OF ADJUSTMENT OF THE BOROUGH OF POINT PLEASANT, OCEAN COUNTY, NEW JERSEY

CHAIRPERSON \_\_\_\_\_ DATE \_\_\_\_\_

SECRETARY \_\_\_\_\_ DATE \_\_\_\_\_

BOARD ENGINEER \_\_\_\_\_ DATE \_\_\_\_\_

PROPOSED NEW CONSTRUCTION FOR:  
**POINT VIEW LUXURY APARTMENTS**  
 Block: 113  
 Lots: 41 & 43  
 Point Pleasant, NJ

SCALE:  
  
 Stephen J. Corleto, AIA  
 N.J.L.C. # A008689

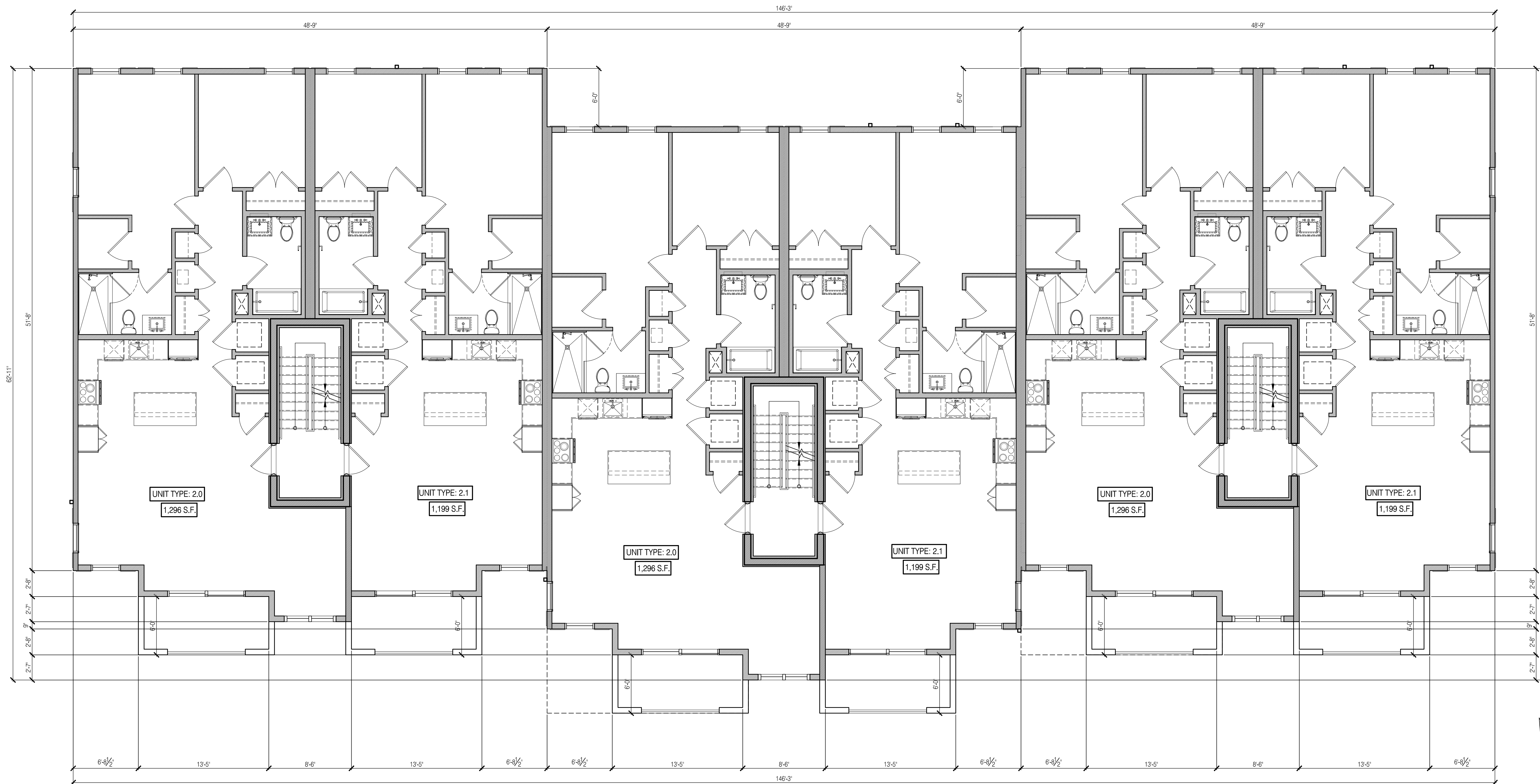
**SHORE POINT ARCHITECTURE, PA**  
 108 South Main Street, Ocean Grove, New Jersey 07756  
 P: 732.774.6900 F: 732.774.7250 www.shorepointarch.com

GROUND FLOOR PLANS  
 SCALE: AS SHOWN  
 DRAWN: AA

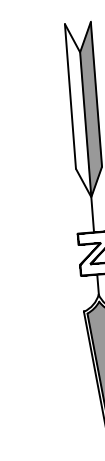
DATE	REVISION/SUBMISSION
12/10/2020	

JOB NUMBER  
**2020-14**

**A-1**  
 TERRA NOVA



① SECOND FLOOR PLAN  
1,905 SF  
3/8" = 1'-0"



**ZONING BOARD OF  
ADJUSTMENT APPROVAL**

APPROVED AT THE ZONING BOARD OF ADJUSTMENT OF THE BOROUGH OF POINT PLEASANT, OCEAN COUNTY, NEW JERSEY

CHAIRPERSON	DATE
SECRETARY	DATE
BOARD ENGINEER	DATE

PROPOSED NEW CONSTRUCTION FOR:  
**POINT VIEW LUXURY  
APARTMENTS**  
Block: 113  
Lots: 41 & 43  
Point Pleasant, NJ

SEAL:  
*Stephen J. Cortese*  
Stephen J. Cortese, AIA  
N.J.L.C. # A006869

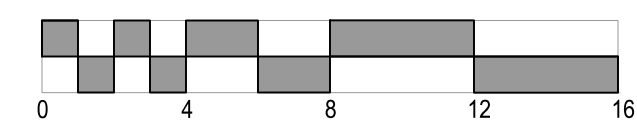
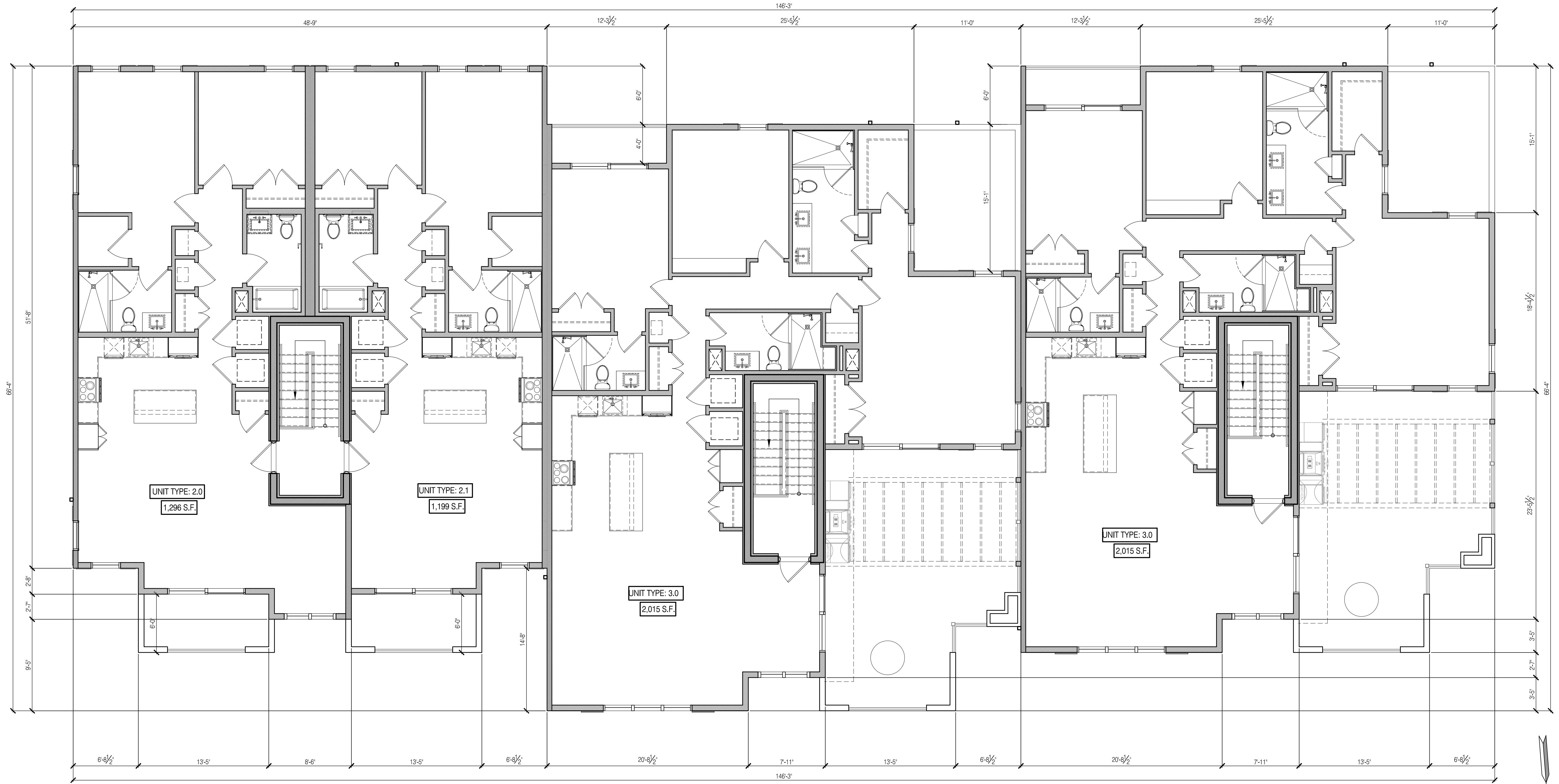
**SHORE POINT  
ARCHITECTURE, PA**  
108 South Main Street, Ocean Grove, New Jersey 07756  
P: 732.774.6900 F: 732.774.7250 www.shorepointarch.com

SECOND FLOOR PLAN  
SCALE: AS SHOWN  
DRAWN: AA

DATE	REVISION/SUBMISSION
12/10/2020	

JOB NUMBER  
2020-14

**A-2**  
TERRA NOVA



① THIRD FLOOR PLAN  
6,952 SF  
3/8" = 1'-0"

**ZONING BOARD OF  
ADJUSTMENT APPROVAL**

APPROVED AT THE ZONING BOARD OF ADJUSTMENT OF THE BOROUGH OF POINT PLEASANT, OCEAN COUNTY, NEW JERSEY

CHAIRPERSON	DATE
SECRETARY	DATE
BOARD ENGINEER	DATE

PROPOSED NEW CONSTRUCTION FOR:  
**POINT VIEW LUXURY  
APARTMENTS**  
Point Pleasant, NJ  
Block: 113  
Lots: 41 & 43

SCALE:  
*Stephen J. Carlini, AIA*  
Stephen J. Carlini, AIA  
N.J.L.C. # A009689

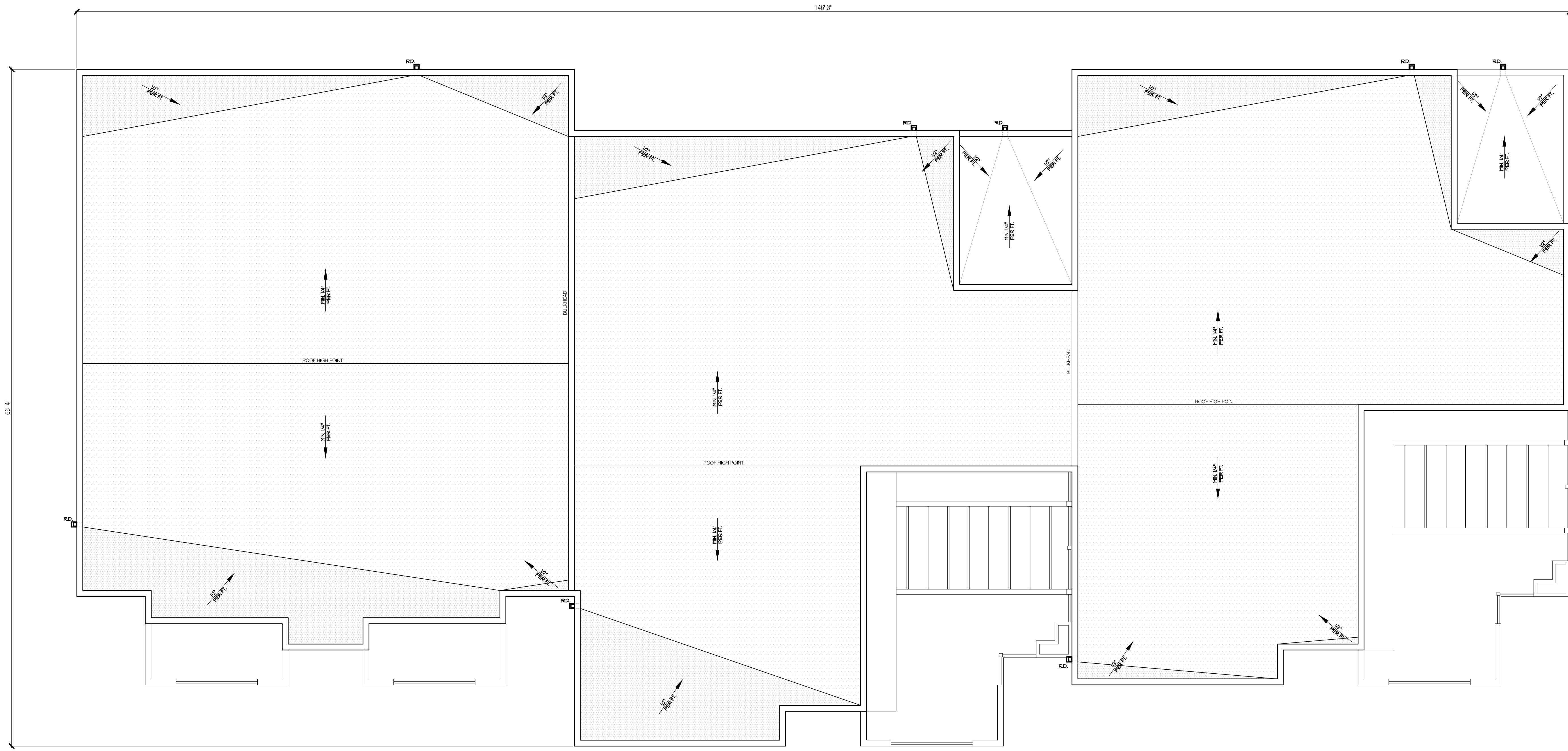
**SHORE POINT  
ARCHITECTURE, PA**  
108 South Main Street, Ocean Grove, New Jersey 07756  
P: 732.774.6900 F: 732.774.7250 www.shorepointarch.com

THIRD FLOOR PLAN  
SCALE: AS SHOWN  
DRAWN: AA

DATE	REVISION/SUBMISSION
12/10/2020	

JOB NUMBER  
2020-14

**A-3**  
TERRA NOVA



① ROOF PLAN  
3/8" = 1'-0"

**ZONING BOARD OF ADJUSTMENT APPROVAL**

APPROVED AT THE ZONING BOARD OF ADJUSTMENT OF THE BOROUGH OF POINT PLEASANT, OCEAN COUNTY, NEW JERSEY

CHAIRPERSON	DATE
SECRETARY	DATE
BOARD ENGINEER	DATE

PROPOSED NEW CONSTRUCTION FOR:  
**POINT VIEW LUXURY APARTMENTS**  
Block: 113  
Lots: 41 & 43  
Point Pleasant, NJ

SEAL:  
*Stephen J. Cariglia*  
Stephen J. Cariglia, AIA  
N.J.L.C. # A009689

**SHORE POINT ARCHITECTURE, PA**  
108 South Main Street, Ocean Grove, New Jersey 07756  
P: 732.774.6900 F: 732.774.7250 www.shorepointarch.com

TYPICAL GROUND AND SECOND FLOOR UNIT PLANS  
SCALE: AS SHOWN DRAWN: AA

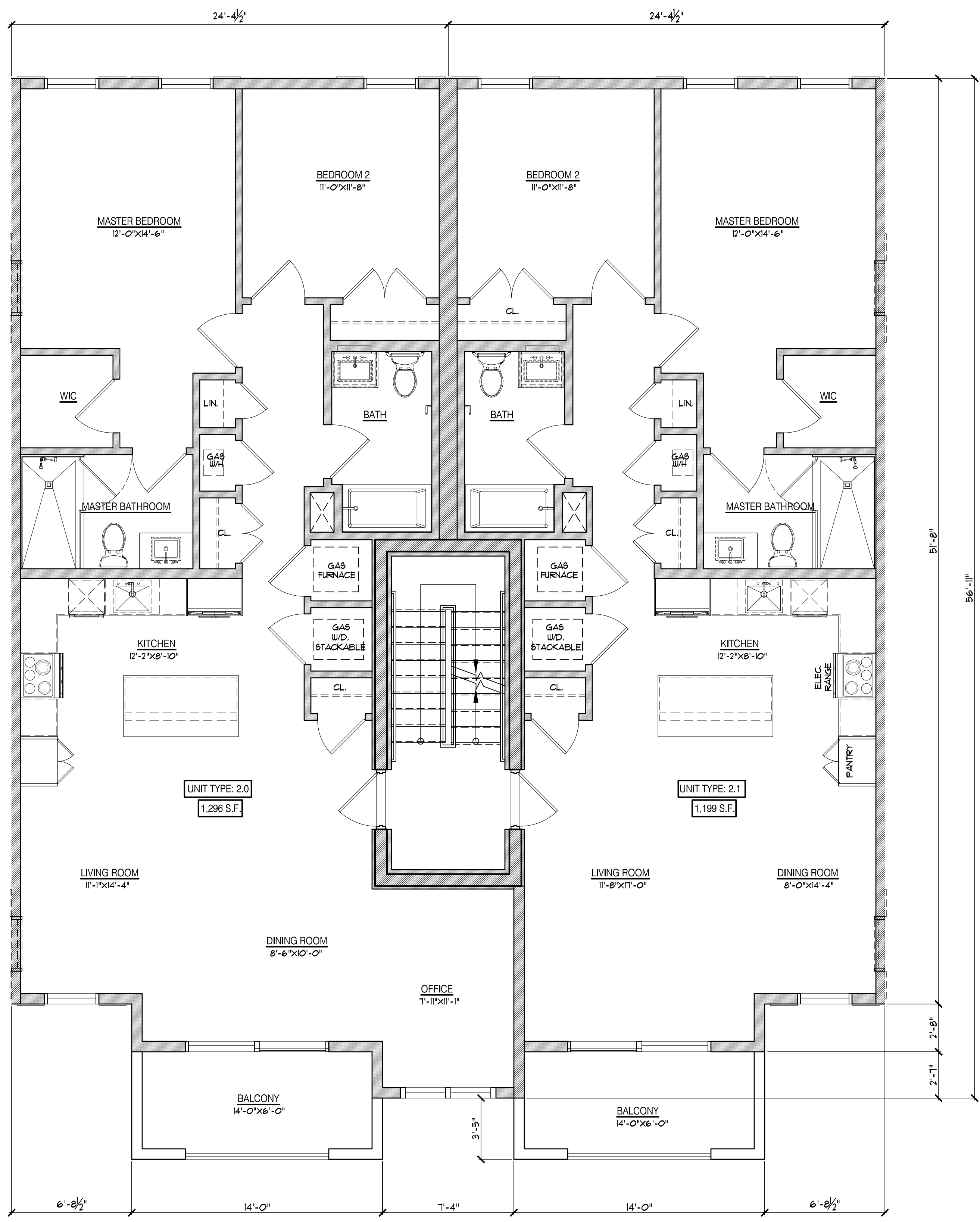
DATE	REVISION/SUBMISSION
12/10/2020	

JOB NUMBER  
2020-14

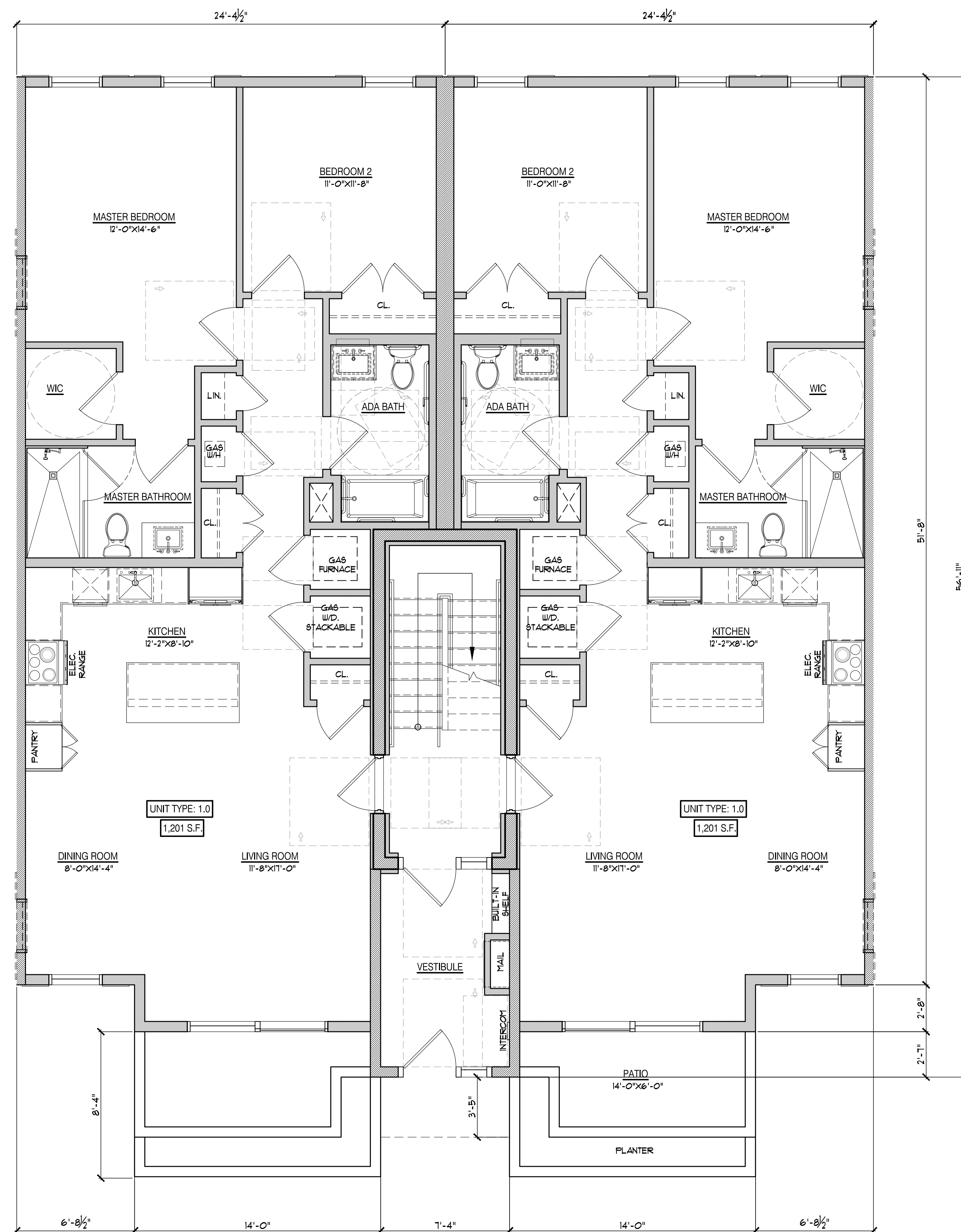
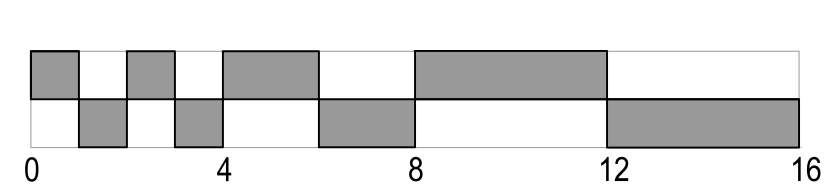
**A-4**  
TERRA NOVA



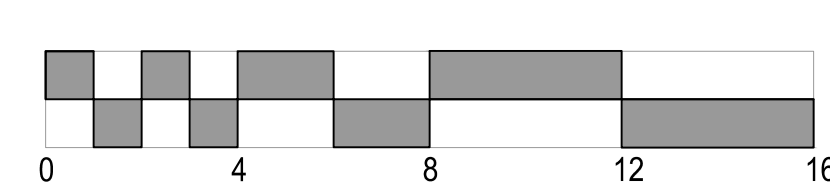
DATE	REVISION/SUBMISSION
12/10/2020	



② TYP. SECOND FLOOR UNIT PLAN  
 1/4" = 1'-0"



① TYP. GROUND FLOOR UNIT PLAN  
 1/4" = 1'-0"



**ZONING BOARD OF ADJUSTMENT APPROVAL**

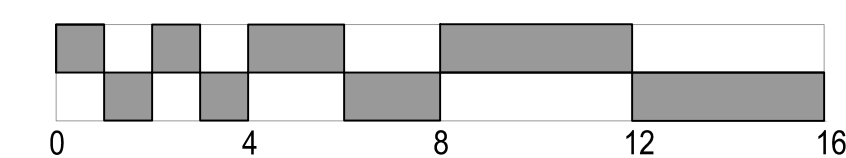
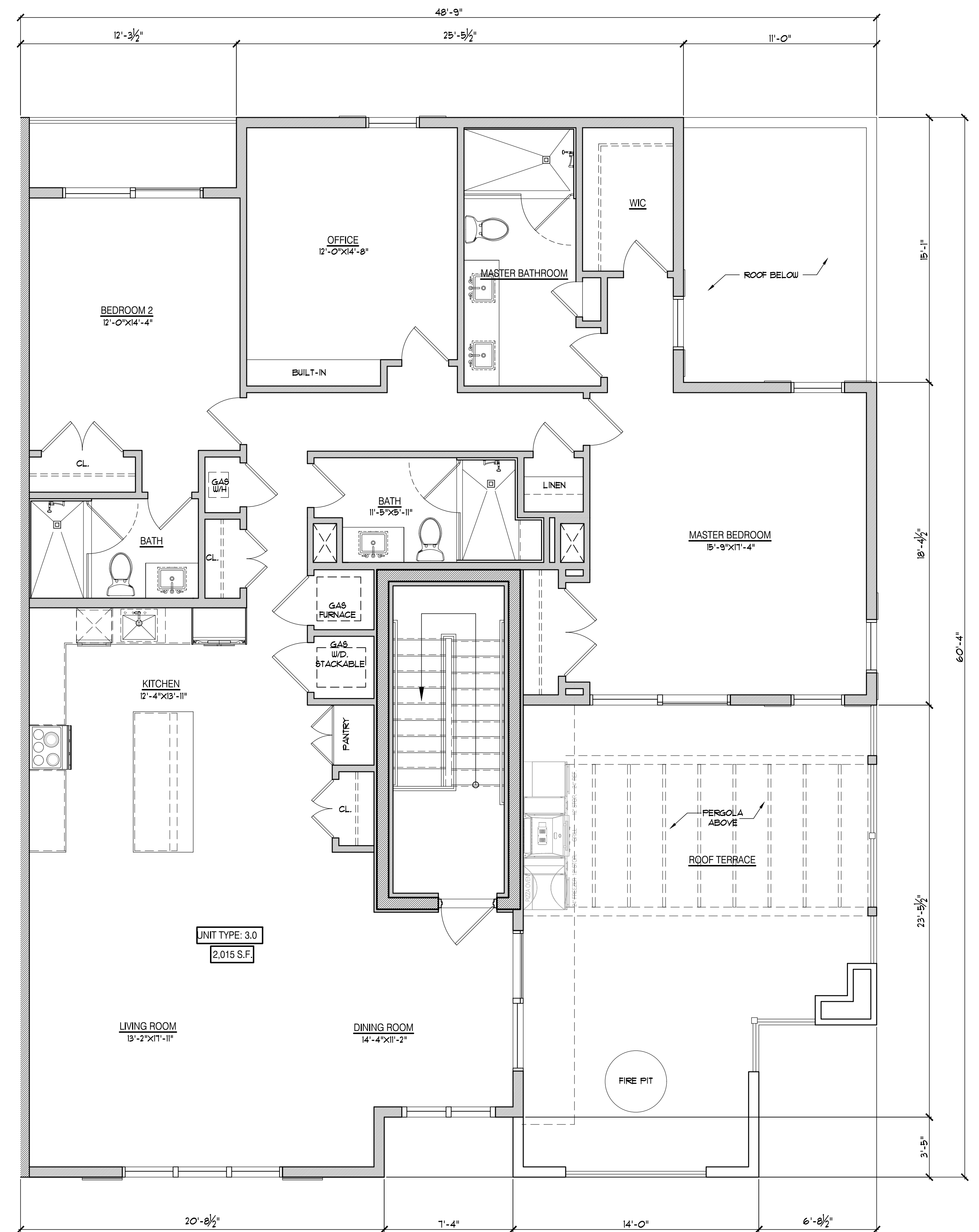
APPROVED AT THE ZONING BOARD OF ADJUSTMENT OF THE BOROUGH OF POINT PLEASANT, OCEAN COUNTY, NEW JERSEY

CHAIRPERSON	DATE
SECRETARY	DATE
BOARD ENGINEER	DATE

**ZONING BOARD OF  
ADJUSTMENT APPROVAL**

APPROVED AT THE ZONING BOARD OF ADJUSTMENT OF THE BOROUGH OF POINT PLEASANT, OCEAN COUNTY, NEW JERSEY

CHAIRPERSON \_\_\_\_\_ DATE \_\_\_\_\_  
 SECRETARY \_\_\_\_\_ DATE \_\_\_\_\_  
 BOARD ENGINEER \_\_\_\_\_ DATE \_\_\_\_\_



① TYPICAL PENTHOUSE PLAN  
 1/4" = 1'-0"

PROPOSED NEW CONSTRUCTION FOR:  
**POINT VIEW LUXURY  
 APARTMENTS**  
 Point Pleasant, NJ  
 Block: 113  
 Lots: 41 & 43

SEAL:  
  
 Stephen J. Cortese, AIA  
 N.J.L.C. #A009689

**SHORE POINT  
 ARCHITECTURE, PA**  
 108 South Main Street, Ocean Grove, New Jersey 07756  
 P: 732.774.6900 F: 732.774.7250 www.shorepointarch.com

TYPICAL PENTHOUSE PLAN  
 SCALE: AS SHOWN  
 DRAWN: AA

DATE	REVISION/SUBMISSION	DATE
		12/10/2020

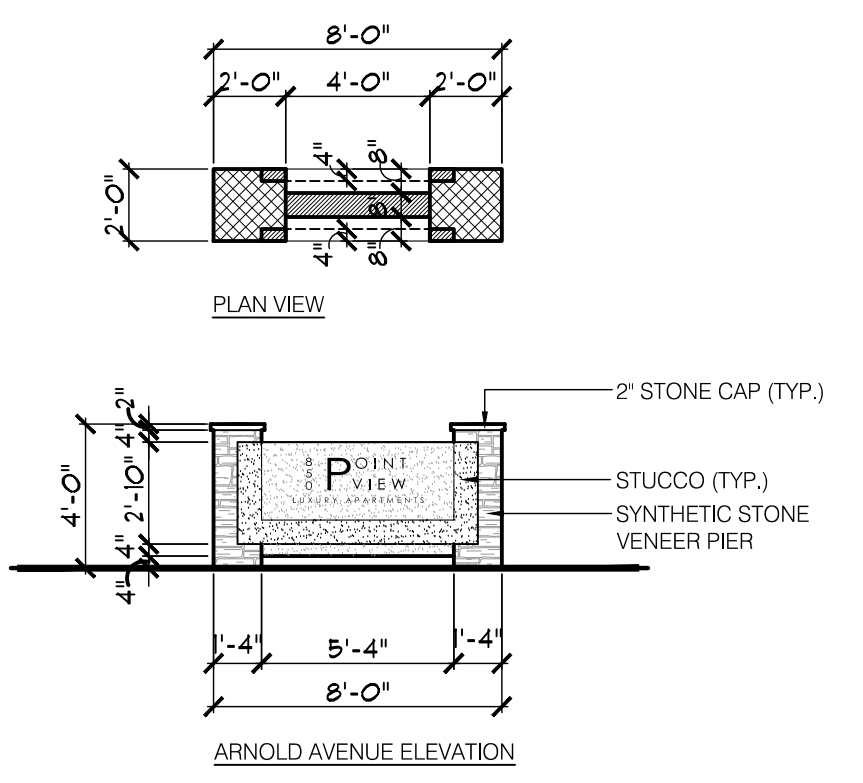
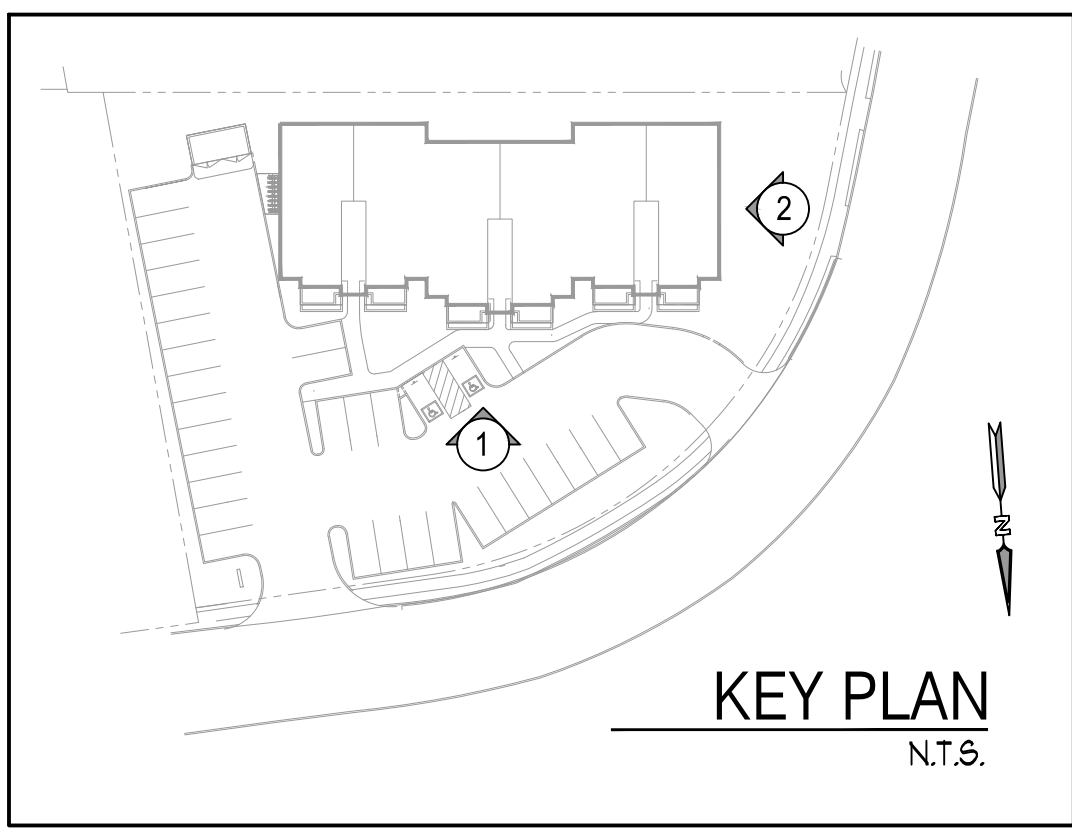
JOB NUMBER  
 2020-14

**A-6**  
 TERRA NOVA

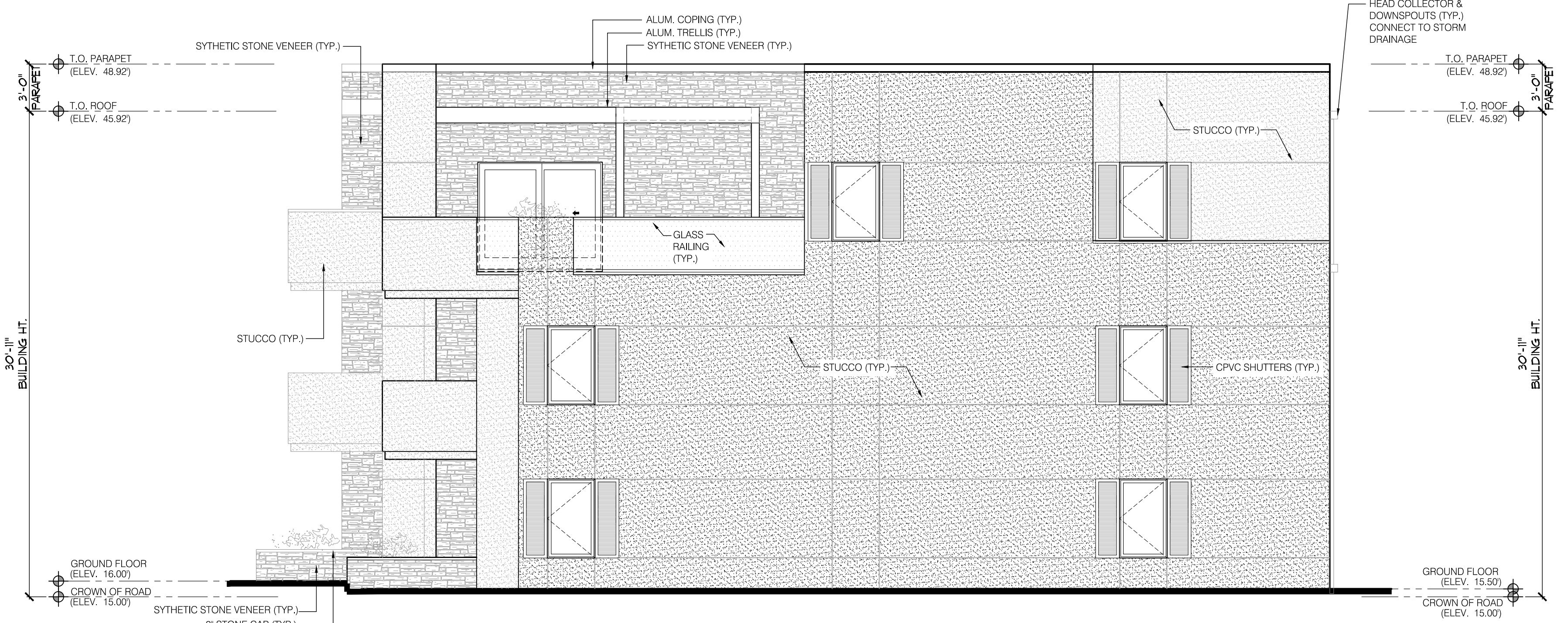




① NORTH ELEVATION  
ARNOLD AVE. 3/16" = 1'-0"



③ SIGNAGE DETAIL 3/16" = 1'-0"



② WEST ELEVATION  
ARNOLD AVE. 3/16" = 1'-0"

**ZONING BOARD OF ADJUSTMENT APPROVAL**

APPROVED AT THE ZONING BOARD OF ADJUSTMENT OF THE BOROUGH OF POINT PLEASANT, OCEAN COUNTY, NEW JERSEY

CHAIRPERSON	DATE
SECRETARY	DATE
BOARD ENGINEER	DATE

PROPOSED NEW CONSTRUCTION FOR:  
**POINT VIEW LUXURY APARTMENTS**  
Point Pleasant, NJ  
Block: 113  
Lots: 41 & 43

SCALE: *Stephen J. Carlini*  
Stephen J. Carlini, AIA  
N.J.L.C. # A009689

**SHORE POINT ARCHITECTURE, PA**  
108 South Main Street, Ocean Grove, New Jersey 07756  
P: 732.774.6900 F: 732.774.7250 www.shorepointarch.com

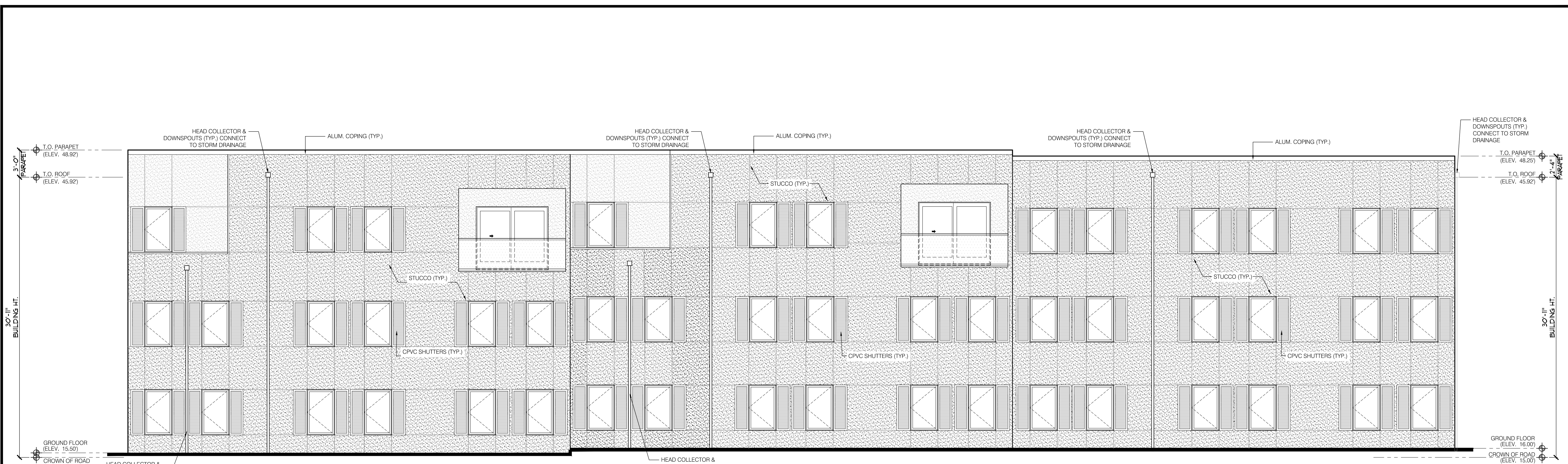
ELEVATIONS  
SCALE: AS SHOWN  
DRAWN: AA

DATE	REVISION/SUBMISSION
12/10/2020	

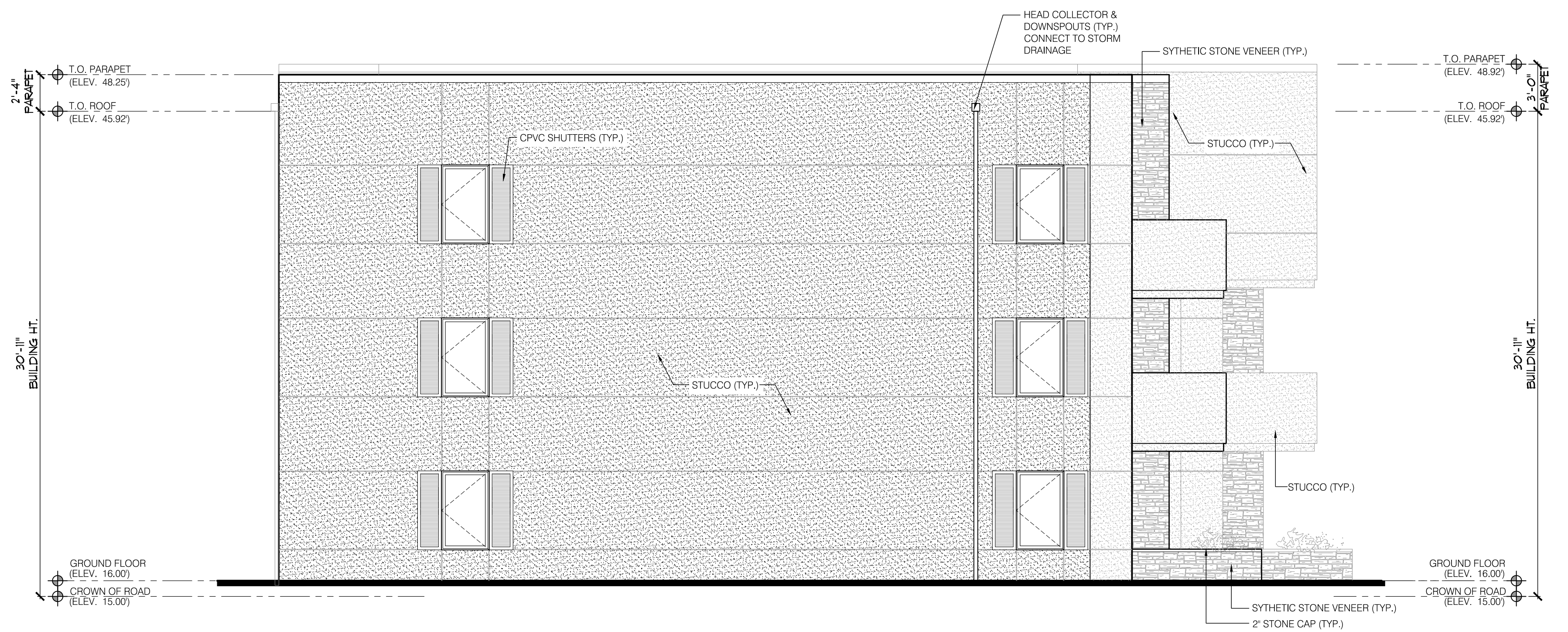
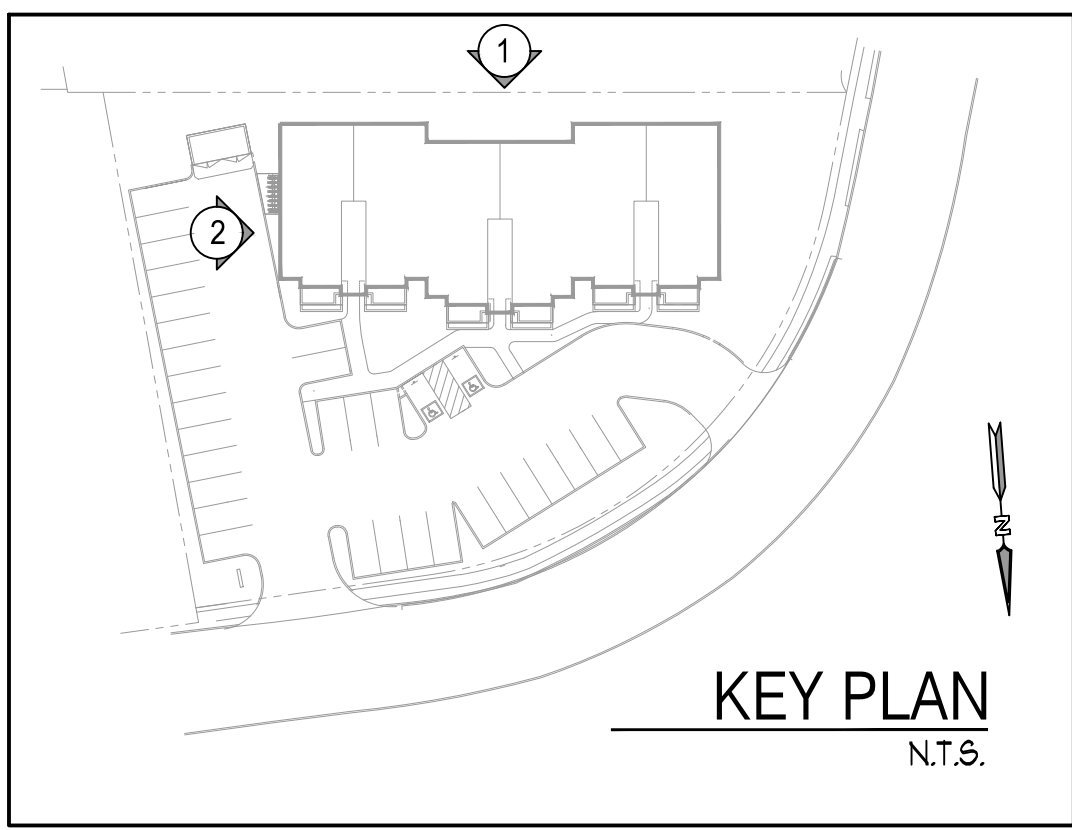
JOB NUMBER  
2020-14

**A-7**  
TERRA NOVA





① SOUTH ELEVATION  
3/8" = 1'-0"



② EAST ELEVATION  
3/8" = 1'-0"

**ZONING BOARD OF ADJUSTMENT APPROVAL**

APPROVED AT THE ZONING BOARD OF ADJUSTMENT OF THE BOROUGH OF POINT PLEASANT, OCEAN COUNTY, NEW JERSEY

CHAIRPERSON	DATE
SECRETARY	DATE
BOARD ENGINEER	DATE

PROPOSED NEW CONSTRUCTION FOR:  
**POINT VIEW LUXURY APARTMENTS**  
Point Pleasant, NJ  
Block: 113  
Lots: 41 & 43

SCALE:  
*Stephen J. Cariglia*  
Stephen J. Cariglia, AIA  
N.J.L.C. # A009689

**SHORE POINT ARCHITECTURE, PA**  
108 South Main Street, Ocean Grove, New Jersey 07756  
P: 732.774.6900 F: 732.774.7250 www.shorepointarch.com

ELEVATIONS  
SCALE: AS SHOWN  
DRAWN: AA

DATE	REVISION/SUBMISSION

JOB NUMBER  
2020-14

**A-8**  
TERRA NOVA